

Welcome to the Class



Department of Computing and Information System

Md. Selim Hossain, Senior Lecturer, CIS, DIU

Project Management Tools

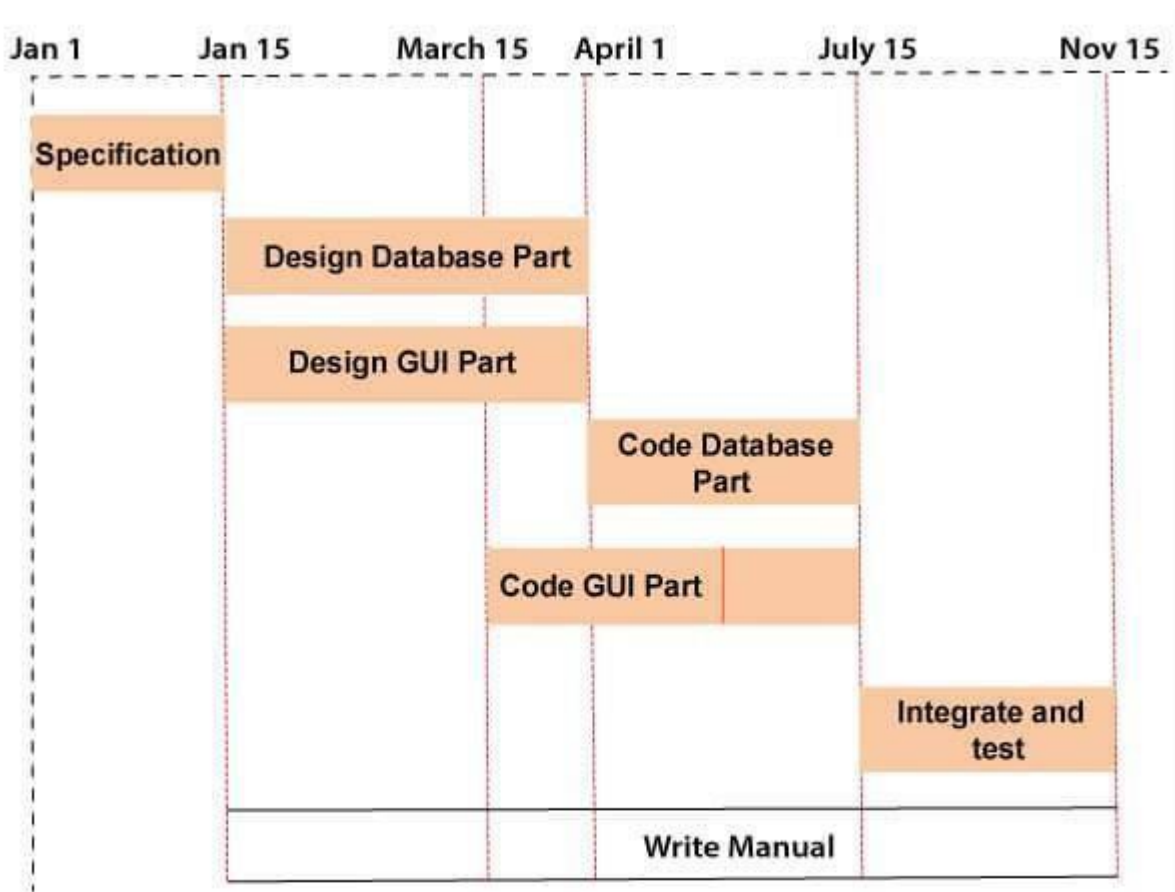
To manage the Project management system adequately and efficiently, we use Project management tools.

Here are some standard tools:

Gantt chart

Henry Gantt developed the Gantt Chart in 1917. Gantt chart is a handy tool when you want to see the whole landscape of either one or multiple projects. It helps you to view which functions are dependent on one another and which event is coming up.

Gantt charts are primarily used to allocate resources to activities. The funds allocated to activities include staff, hardware, and software. Gantt charts are useful for resource planning. A Gantt chart is a particular type of bar chart where each bar represents an activity. The bars are drawn along a timeline. The distance of each bar is proportional to the duration of time planned for the corresponding event.

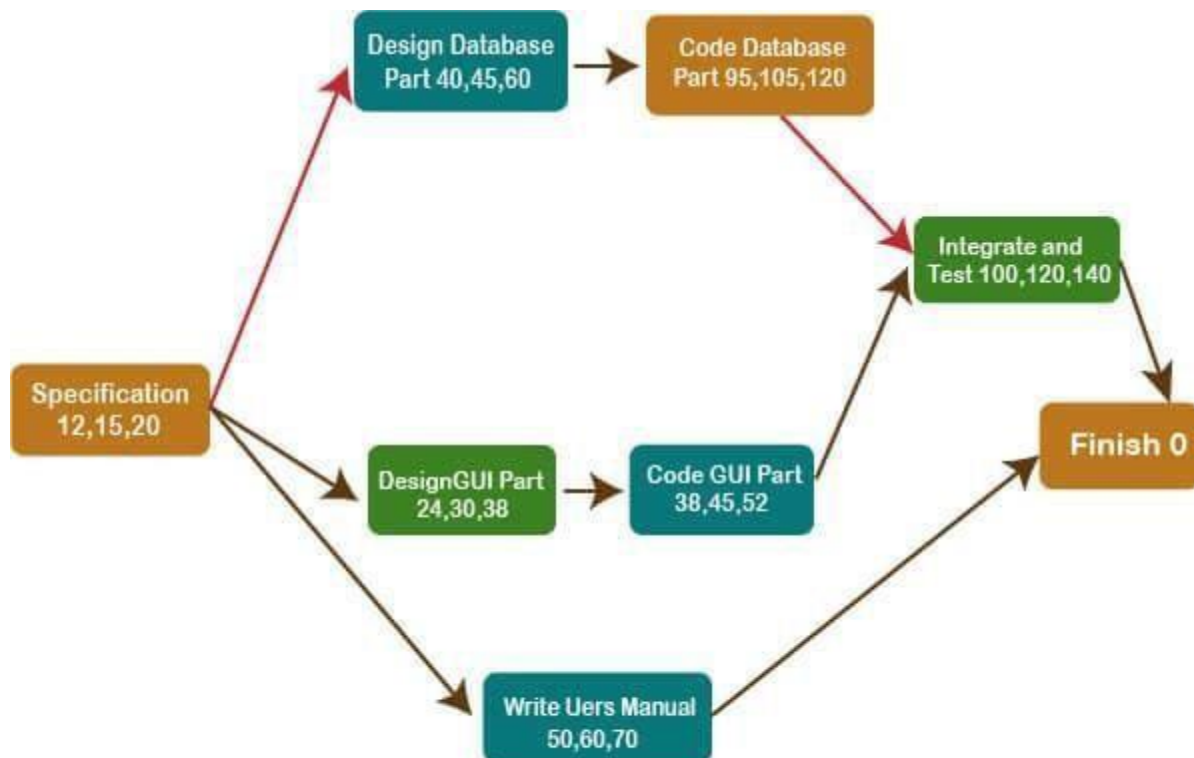


Gantt chart representation of the MIS Problem

PERT chart

PERT (Project Evaluation and Review Technique) charts contain a network of boxes and arrows. The boxes show activities, and the arrows represent function dependencies. PERT chart represents the numerical variations in the plan estimates assuming a normal distribution. Thus, in a PERT chart consist of making a single estimate for each function, pessimistic, likely, and optimistic size is made. The boxes of PERT charts are generally annotated with the pessimistic, likely, and optimistic estimates for each method.

Gantt chart representation of a project record is useful in planning the usage of resources, while PERT chart is useful for monitoring the proper progress of activities. Also, it is easier to identify parallel operations in a project utilizing a PERT chart. Project managers use to determine the parallel activities in a project for assignment to various engineers.



PERT chart representation of the MIS problem

Any Question???